

Anti-HSV Tag Monoclonal Antibody



<u>Catalog No.</u>	<u>Size</u>
E022080-01	100µl
E022080-02	500µl
E022080-03	50µl

Specificity	Anti- HSV Tag (C-terminal internal and N-terminal)
Source	Mouse Monoclonal
Application	WB
Form	Liquid, 1 mg/ml

Application Notes

Optimal working dilutions should be determined experimentally by the investigator. Suggested starting dilutions are as follows: Western blot (1:1000-1:5000)

Source and Purification

This monoclonal antibody is produced by immunizing mice with a synthetic peptide QPELAPEDPED coupled to KLH. Antibodies are purified by protein A affinity chromatography.

Specificity and Sensitivity

Anti- HSV Tag Monoclonal Antibody recognizes C-terminal, internal and N-terminal HSV-tagged proteins.

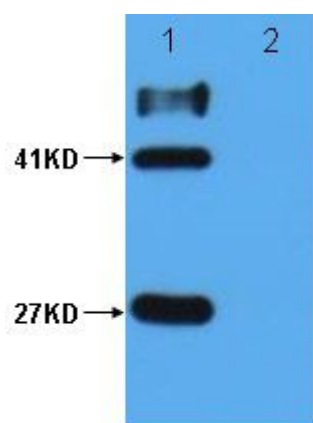
Storage Buffer

PBS, pH 7.4 with 0.05% sodium azide, 50% Glycerol.

Storage Instructions

Stable for 1 year at -20 °C from date of shipment. For maximum recovery of product, centrifuge the original vial after thawing and prior to removing the cap. Aliquot to avoid repeated freezing and thawing. Aliquot will be stable at 4°C for 3 months.

Images



Lane 1: GST- HSV fusion protein (27KD); MBP- HSV 2 fusion protein (41KD)

Lane 2: GST protein; MBP protein.